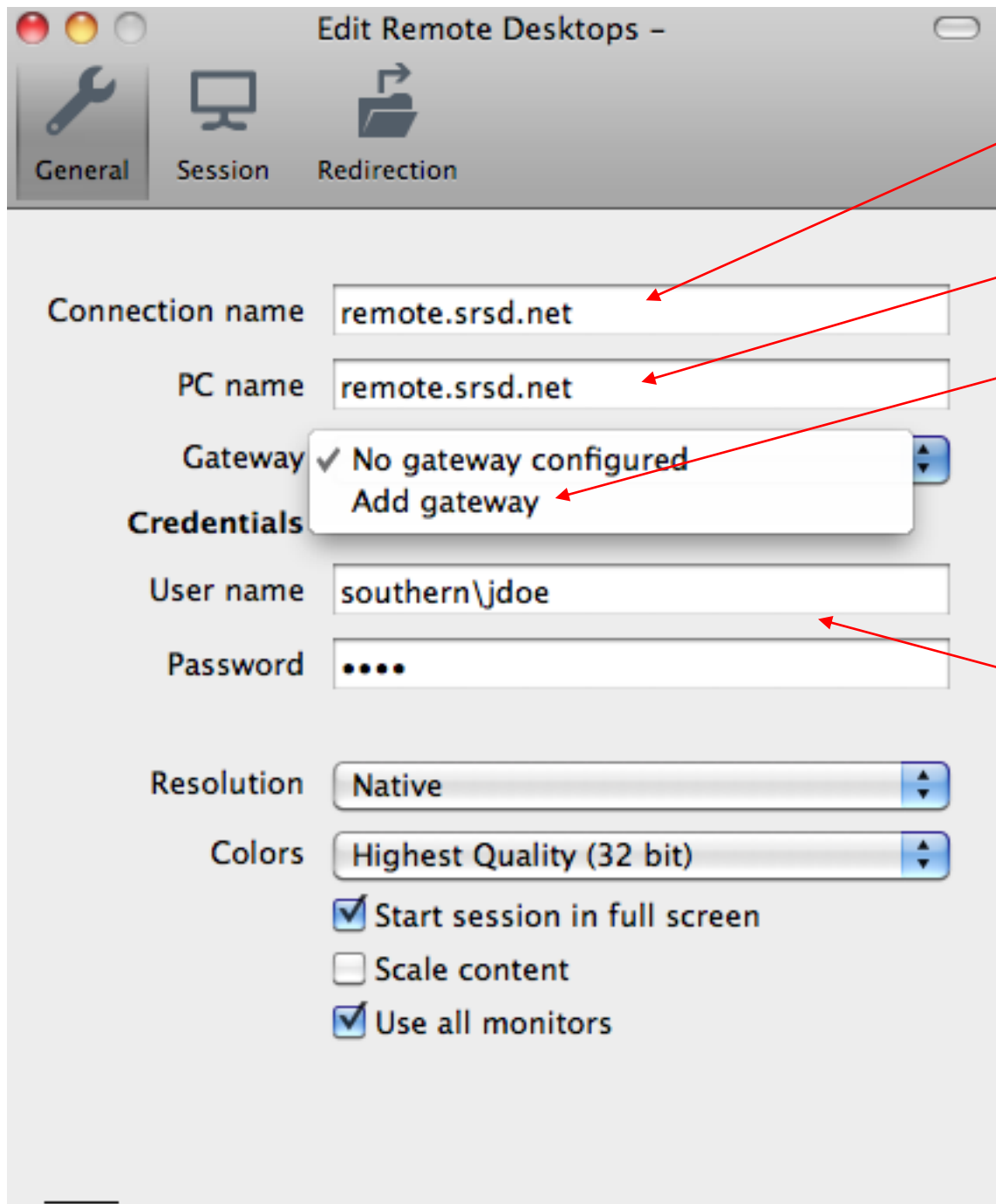


Click on "New" to create a new connection setting file.



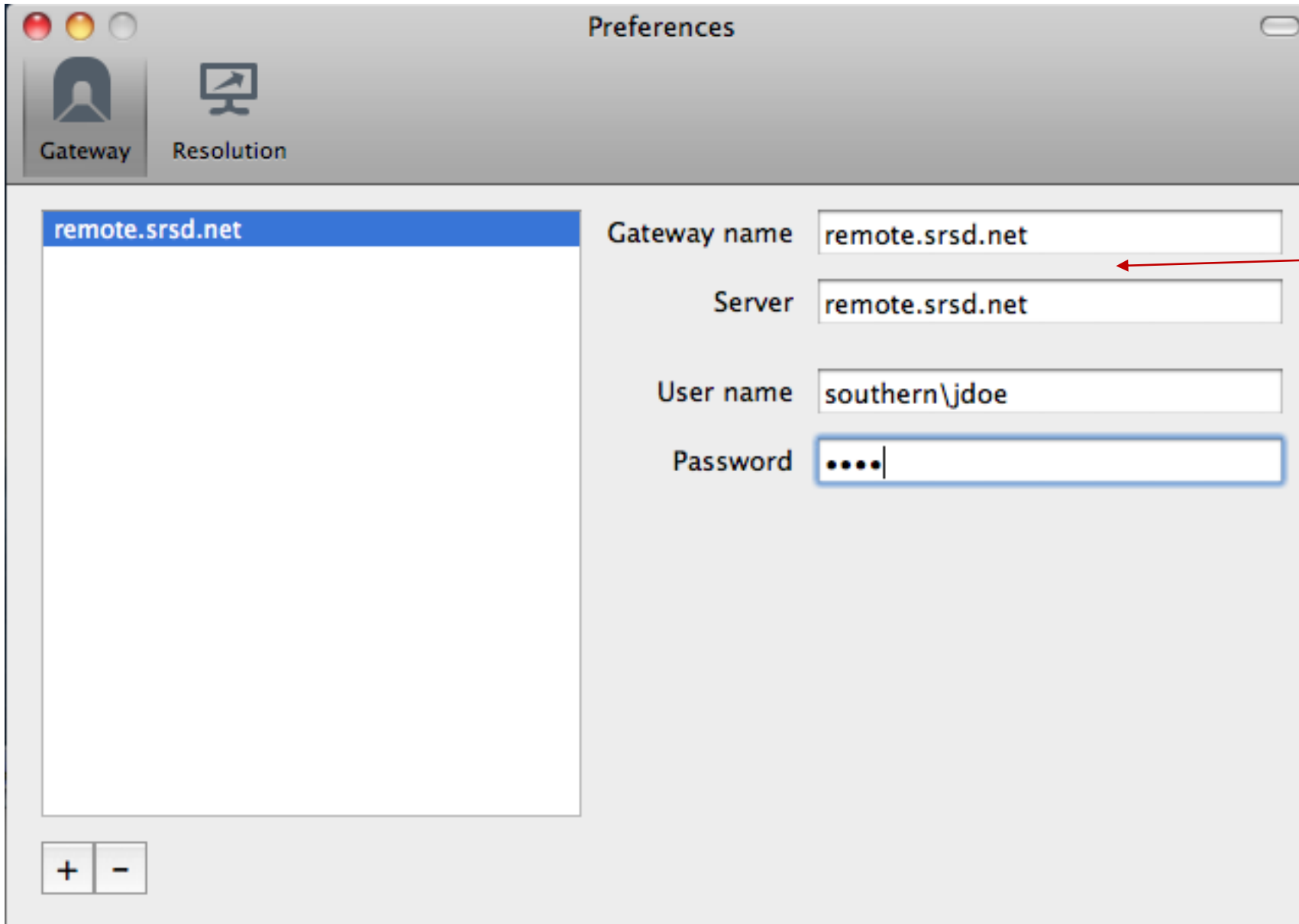
Type in a name for the Connection Name: i.e remote.srsd.net

PC Name: remote.srsd.net

We will need to add a gateway setting in order to connect to the district remote desktop servers. Click on "Add Gateway".

Type in your username and password.

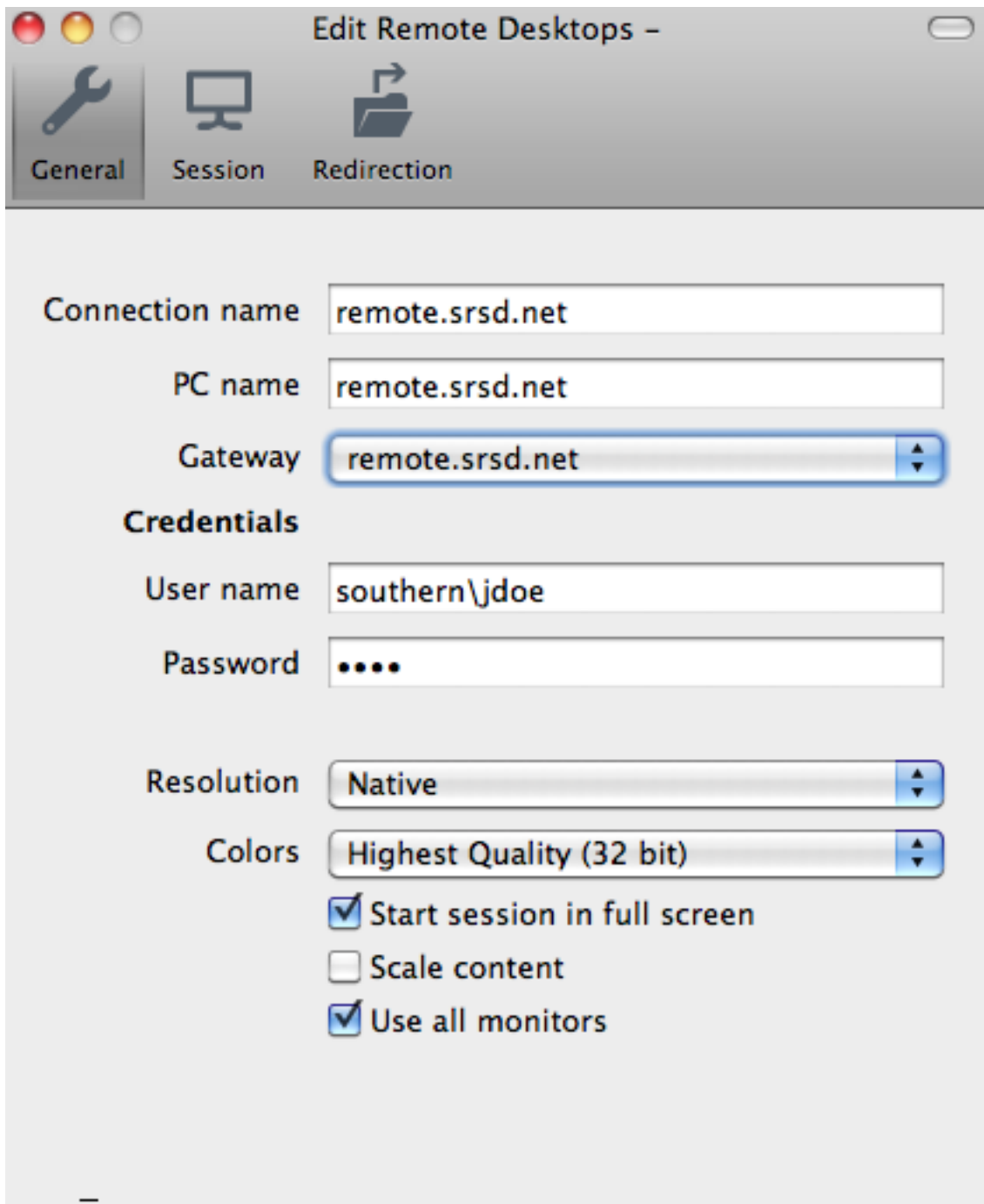
If you are a student and teacher, your username will be in the form of southern\jdoe. If you are an administrator or professional assistant, your username will be in the form of adram\jdoe.



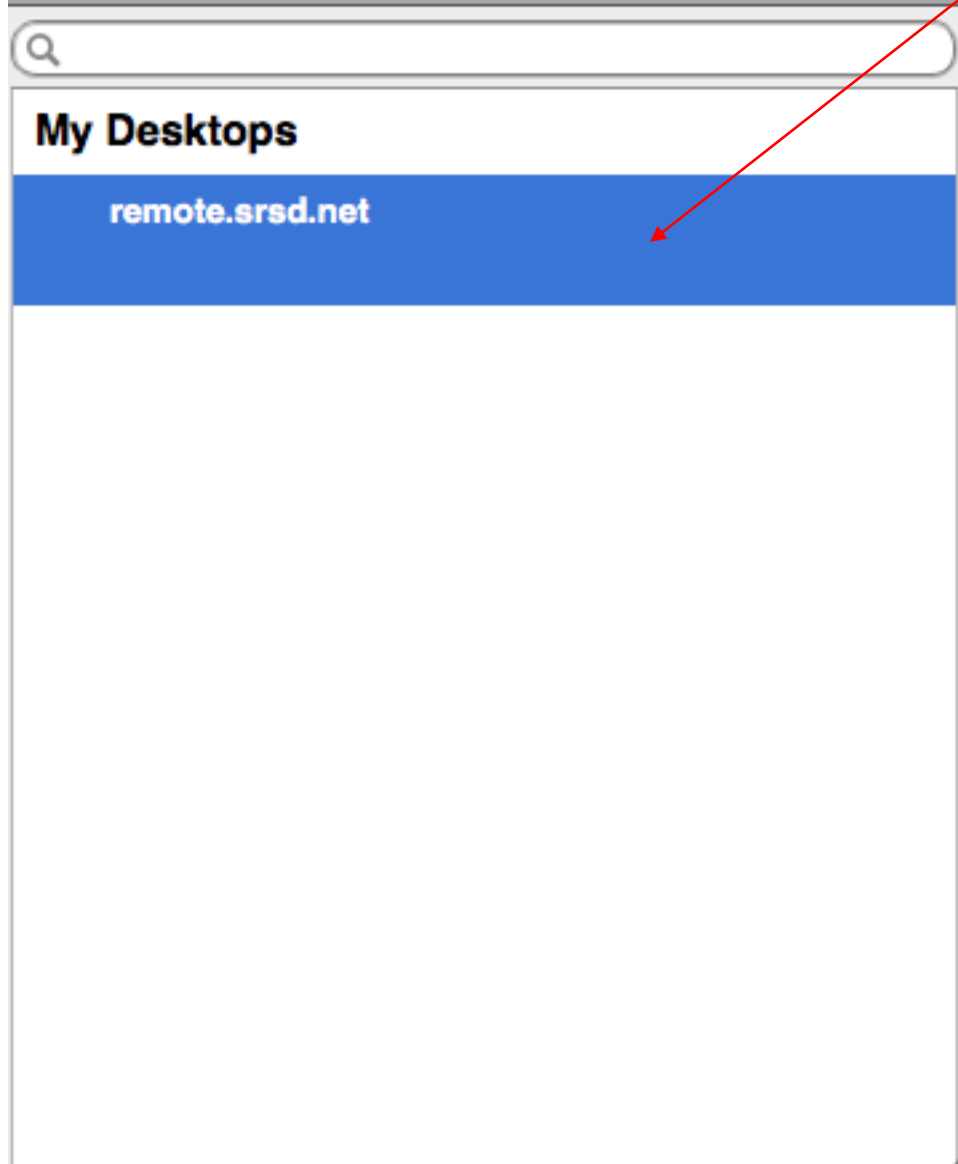
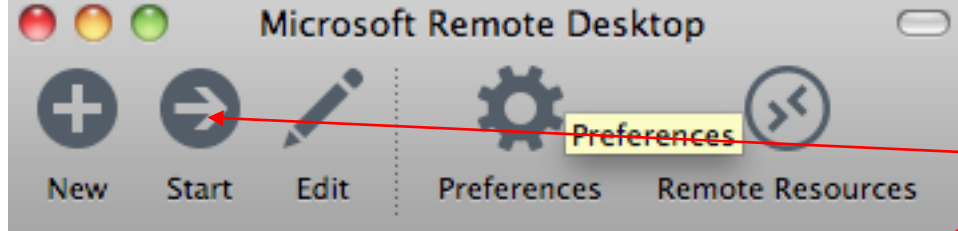
On this screen, we will add the settings for the gateway server information.

The gateway name and server need to be remote.srsd.net.

Lastly, type in your username and password as you did on the previous screen.



On this screen, you will see the settings completely filled out correctly.



To start the session, highlight “remote.srsd.net” and then click on “Start”